

PARTS LIST, PFH (017930)

KEY	QTY.	PART#	DESCRIPTION	Key	Qty	Part#	Description
1	1	014809	Roll pin, .093 x 1.000	17	1	017937	Pivot pin
2	1	017959	Drive pawl	18	1	020517	Feedwheel
3	1	017946	Drive pawl spring	19	1	017941	Lift arm
4	1	017932	Tension handle	20	1	001656	Strap guide pin
5	1	017945	Pawl pin	21	1	017935	Breaker nose
6	1	017925	Pinion gear	22	2	007878	SHCS, 1/4-28 x 3/4
7	1	017926	Tension gear	23	1	091526	Roll pin, 1/4 x 7/8
8	1	017929	Bushing	24	1	017939	Wear plug
9	1	017947	Feedwheel shaft	25	1	017952	Lock wire
10	1	041912	Screw BHCS, #10-24 x 3/8	26	1	017942	Base spring
11	1	184501	Washer, 3/16 SAE	27	1	003133	Warning sign
12	1	043982	Screw BHSCS, 5/16-24 x 1/2	28	1	017934	Base
13	1	004959	Washer, 5/16 SAE	29	1	017955	Nameplate
14	2	017943	Hold pawl	31	1	424035	Bushing
15	1	017928	Gear housing	32	1	020694	Set screw
16	2	017944	Hold Pawl Spring				

⚠ WARNING

Inspect all parts daily and replace them if they are worn or broken. Failure to do this can affect a product's operation and could result in serious personal injury.

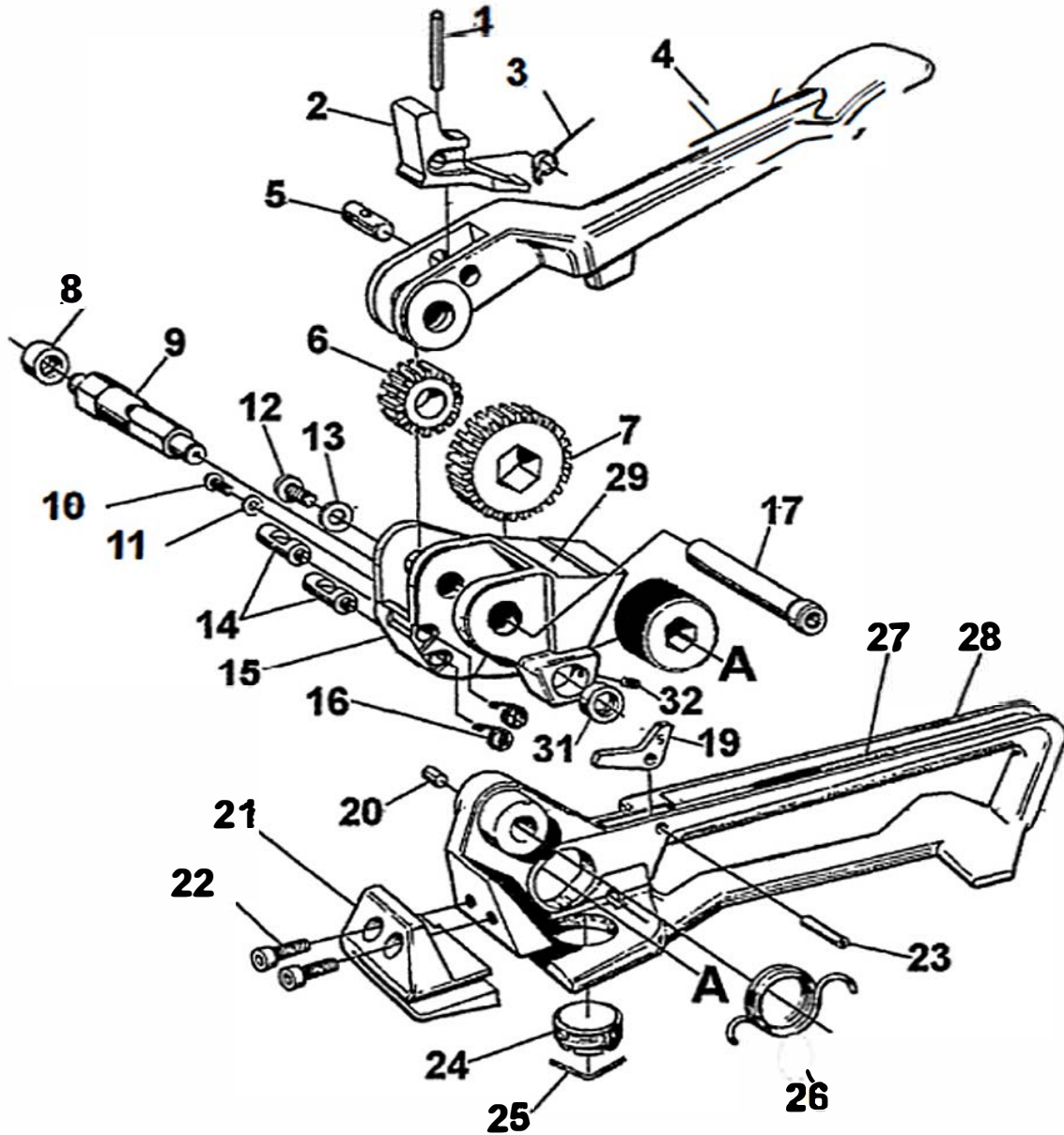


Grant Packaging

Strapping Products and Accessories

NOTES:

1. When ordering parts, please show tool model, part number and name. All recommended spare parts are underlined and should be stocked. Standard hardware parts may be obtained from local hardware suppliers.
2. Slot in roll pin (23) must face down.
3. Assemble lift arm (19) with leg marked "S" as shown.



MAINTENANCE

Clean and apply a light weight machine oil to all moving parts on a weekly basis. Clean the feedwheel daily with a wire brush. Debris accumulated in the teeth of either the feedwheel or the clutch plug must be removed with a small wire brush. A need to clean the teeth will become apparent when either the feedwheel slides on the strap or the lower straps slips on the clutch plug during tensioning.